

austrianyvineyards.com: online viewer of all designations of Austrian wine

team project development: Susanne Ertler-Staggl², Karel Kriz³ & Richard Artner⁴

team geology: Maria Heinrich¹, Heinz Reitner⁵ & Ingeborg Wimmer-Frey⁶

Session A Poster 4 A12

²) Mag. Susanne Ertler-Staggl, Austrian Wine Marketing Board, Vienna

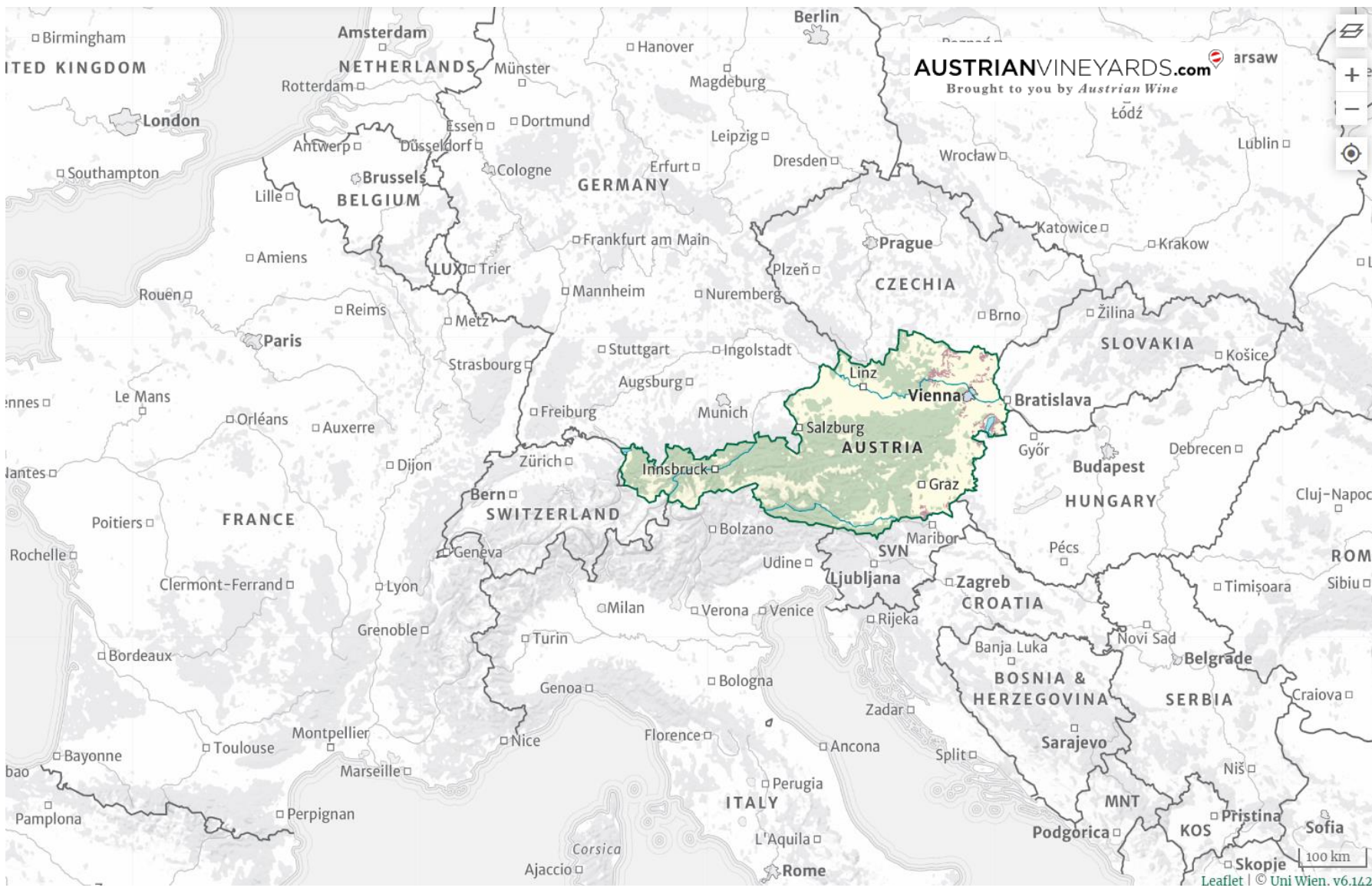
¹) Dr. Maria Heinrich, geologist, Vienna

⁵) Heinz Reitner, geologist, Geological Survey of Austria, Vienna

⁶) Dr. Ingeborg Wimmer-Frey, petrologist, Zisterdorf, Lower Austria

³) Mag. Dr. Karel Kriz, University of Vienna, Dep. of Geography and Regional Research, Cartography and Geoinformation, Vienna

⁴) Dipl.-Ing. Mag. Richard Artner, plan-land Artner Tomasits OG, Burgenland



Austria is a small landlocked country of about 84000 square kilometres in the center of Europe.

the idea

The motivation of the Austrian Wine Marketing Board (Austrian Wine) to start this project in 2018 was to record and present digitally the origins of Austrian wines in a standard and consistent way all across Austria. In June 2021, the results were presented to the public via an online viewer showing all the designations of Austrian wine.

This viewer is available at <https://austrianyvineyards.com> in a largely barrier-free manner.



AUSTRIANYVINEYARDS.com
Brought to you by Austrian Wine

NIEDERÖSTERREICH
GENERIC WINE-GROWING REGION

27 160 ha (2.8% terraced) 14.6-627 m

ORIGIN
Wine-growing area: Weinland
Wine-growing country: Österreich
Origin pyramid

GRAPE VARIETIES
WHITE 78% (21 262 ha) 22% (5 898 ha) RED

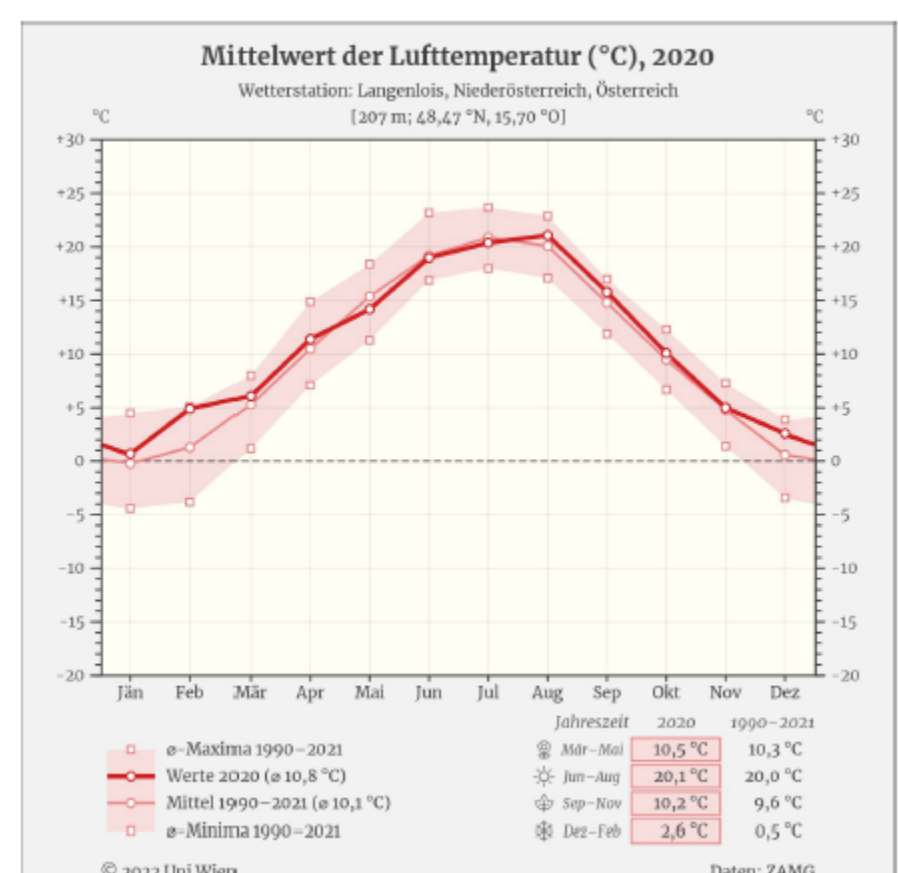
DESCRIPTION
The Danube flows through Austria's largest wine producing federal state like an artery. A multitude of wines are produced here, using many grape varieties: white wines ranging from light and spritzy to monumentally-structured examples, elegant red wines, sparkling wines and exquisite dessert wines. The area comprises eight specified winegrowing regions, each of which produces wine styles with their own regional typicity.



additional data

Climate data are included as additional information. The diagrams show monthly data taken from the annals of the Central Institute for Meteorology and Geodynamics (ZAMG). Air temperature, precipitation, and sunshine hours for the reference year and the long-term average are presented. Seasonal aggregated data on temperature, precipitation, and sunshine hours complete the display.

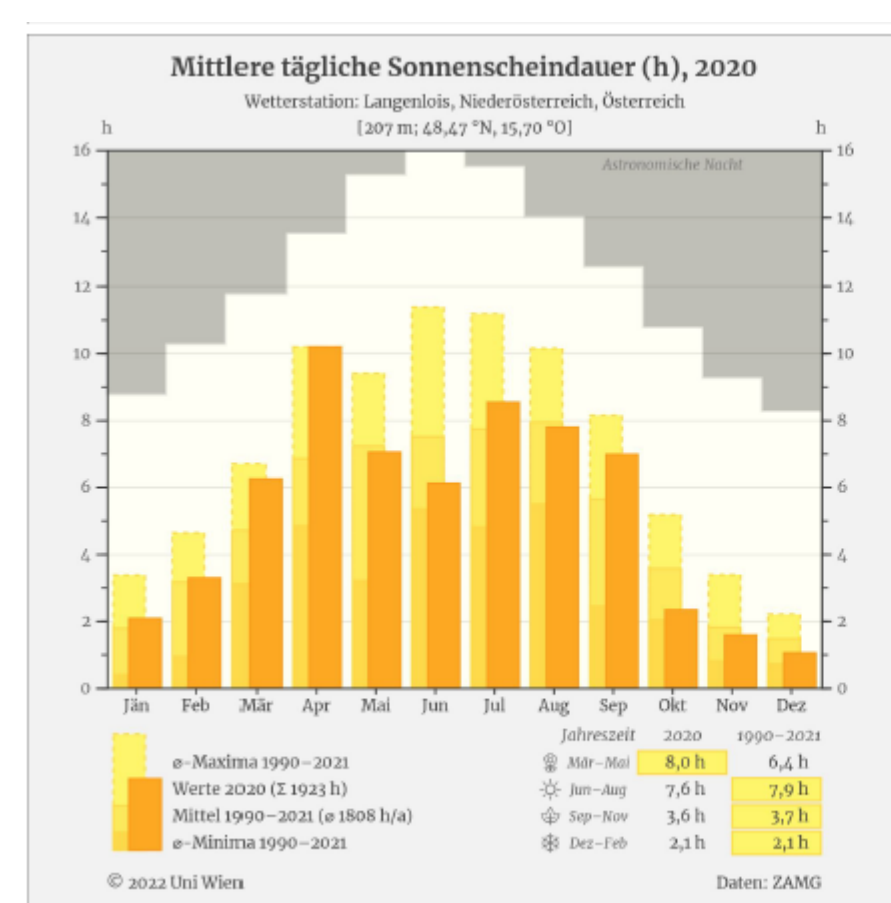
AUSTRIANYVINEYARDS.com Brought to you by Austrian Wine



Climate:

Seasons	☀ ☁ ☔ ❄
Temperature	10,3 19,9 9,6 0,0 09,9 °C
Precipitation	124 234 110 58 Σ 526 mm
Sunshine hours	6,4 7,9 3,7 1,7 04,9 h/d

Reference weather station: Langenlois
Data: ZAMG, Values 1990-2021

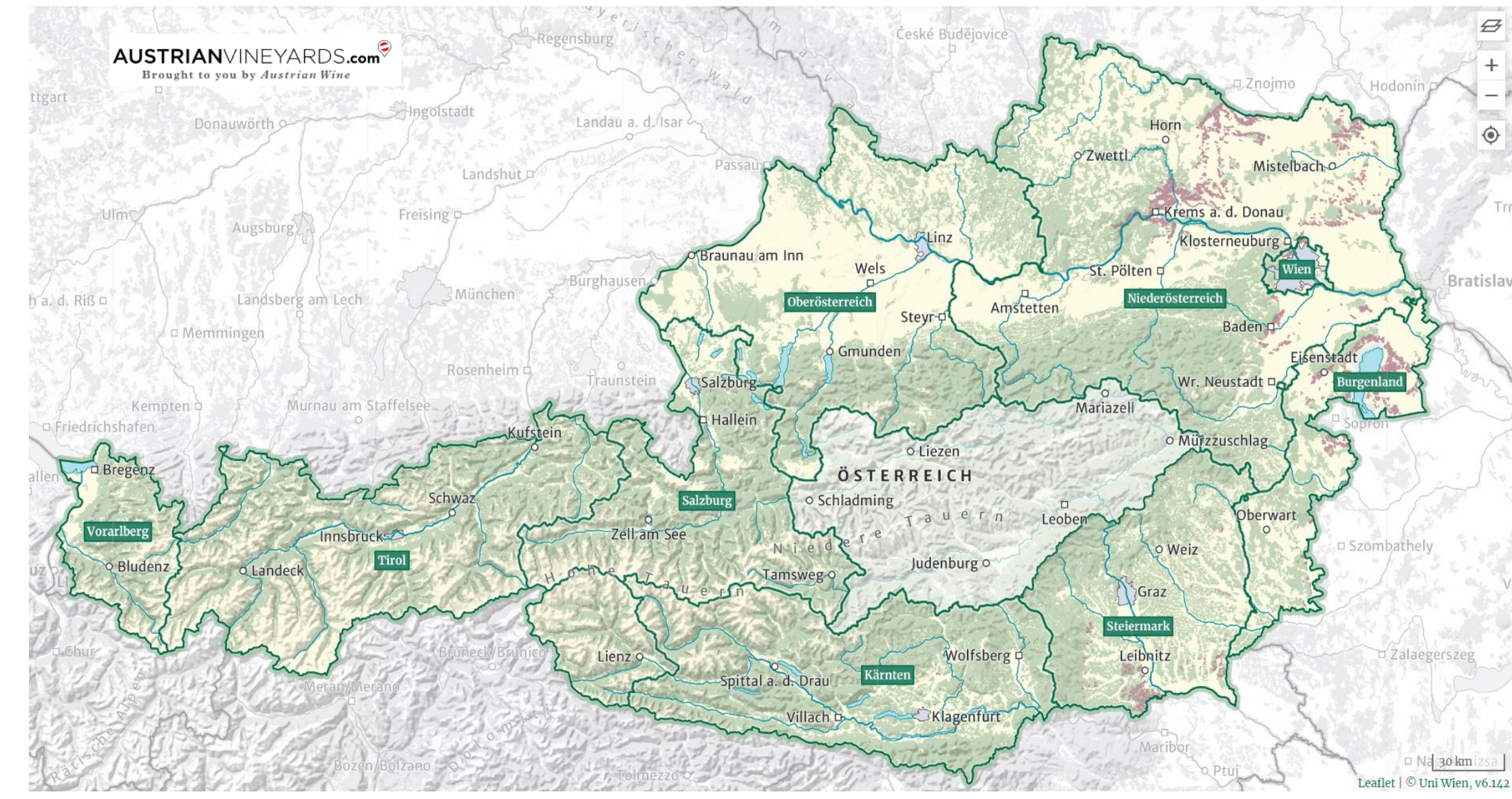
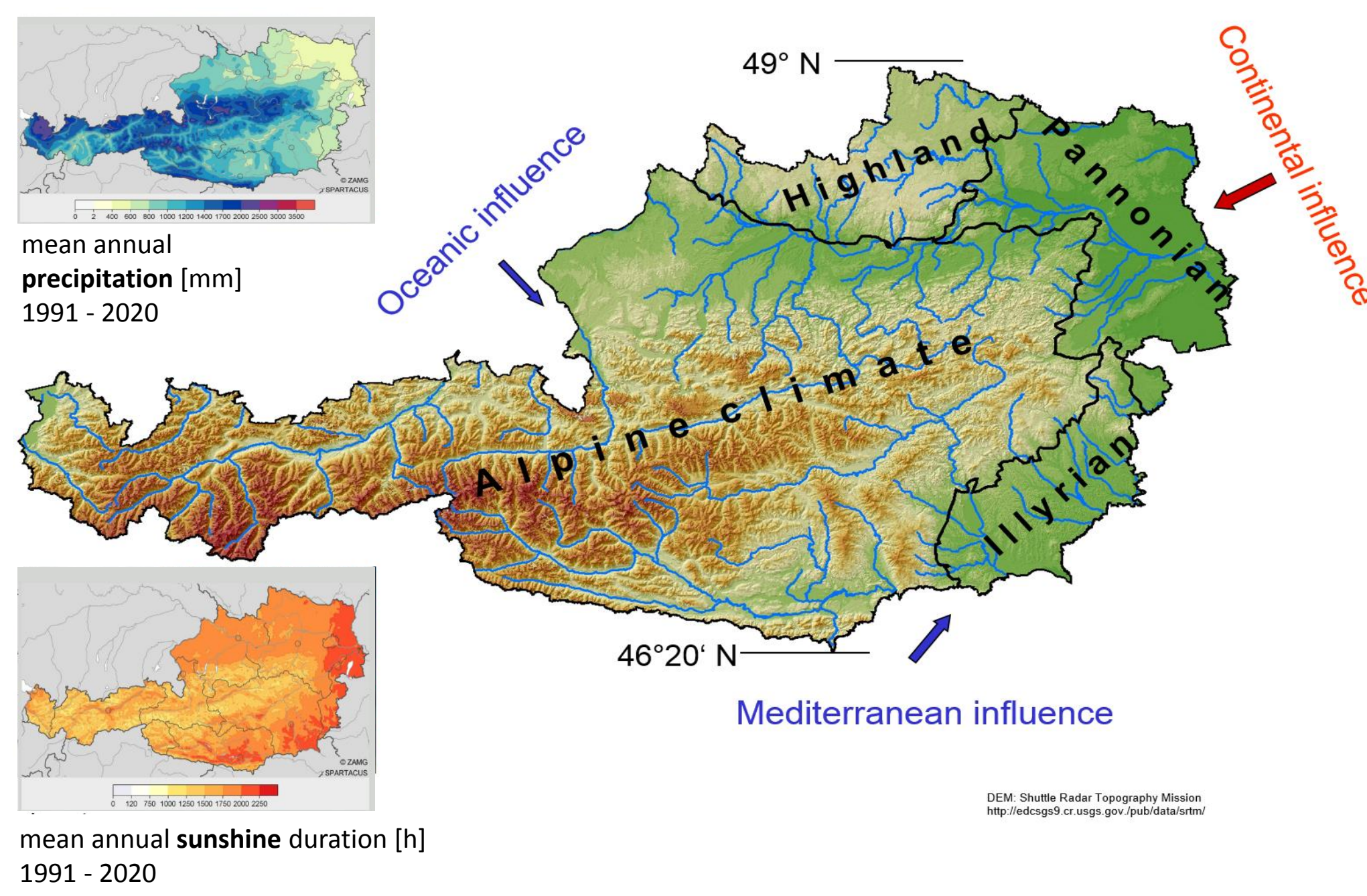


Sunshine hours:

The diagram shows the average daily sunshine hours for each month of the current year of measurement in orange. The long-term average for the last approx. 20 years is shown in a lighter color. Alongside this, the long-term minimum and maximum values are shown in yellow. The white areas in the diagram show the maximum possible daily sunshine hours for each month.

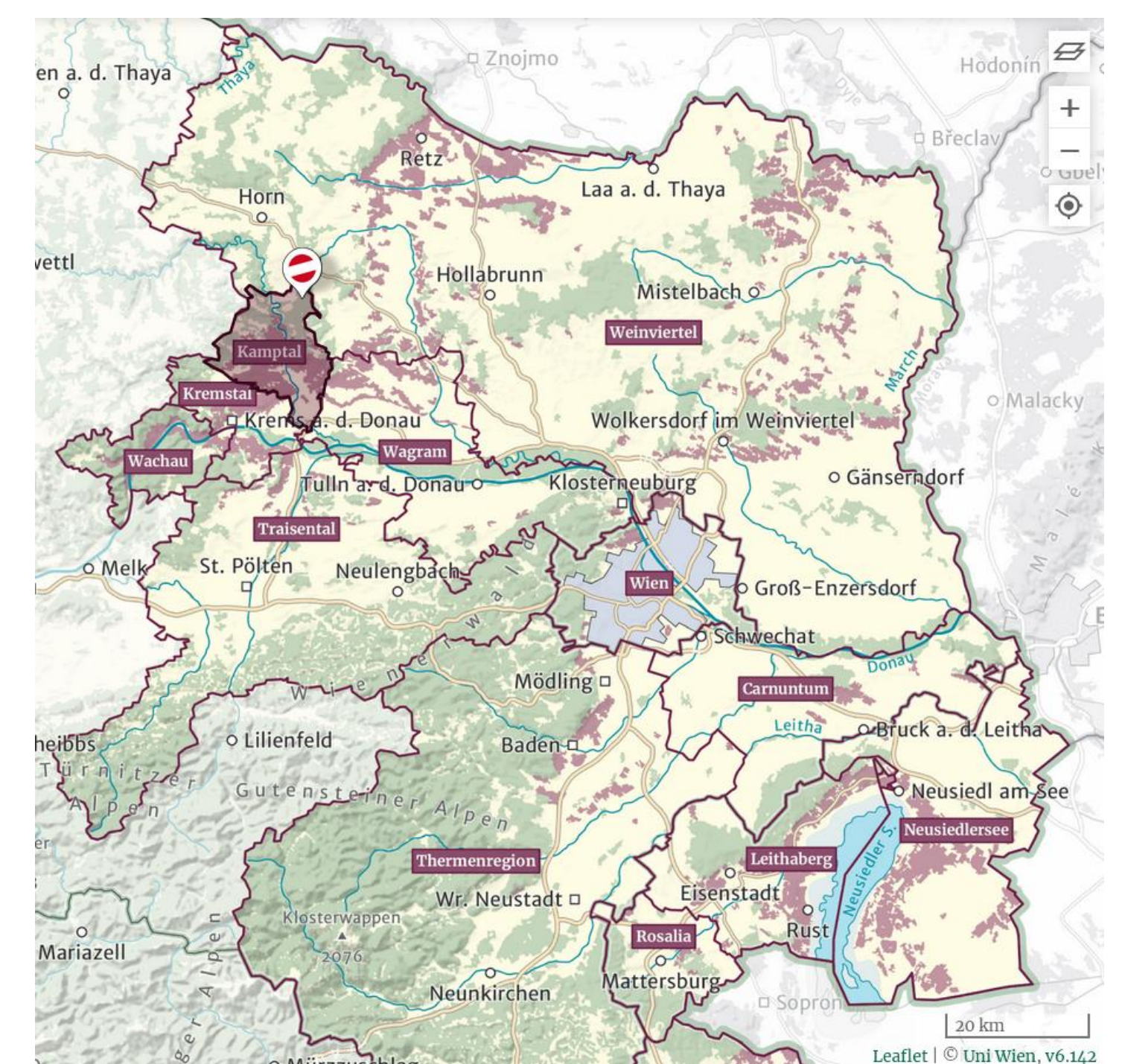
conclusion

The origin of a wine is undoubtedly a key issue, not only for the wine industry, but also for wine consumers. The terroir, or rather the location, of a grape vine holds important indicators of both wine-growing and wine quality. The viewer shows all you want to know about the vineyards in Austria!



Due to the geological history and favourable climatic conditions most wine-growing regions are located in the eastern part of the country.

The online viewer provides tailored individual maps fitted to the respective zoom level.



the outcome

The smallest unit of wine-origins in Austria is called 'Ried' and is displayed in a plot-specific manner highlighting areas under vine.

AUSTRIANYVINEYARDS.com Brought to you by Austrian Wine

LAMM
RIED (SINGLE VINEYARD)

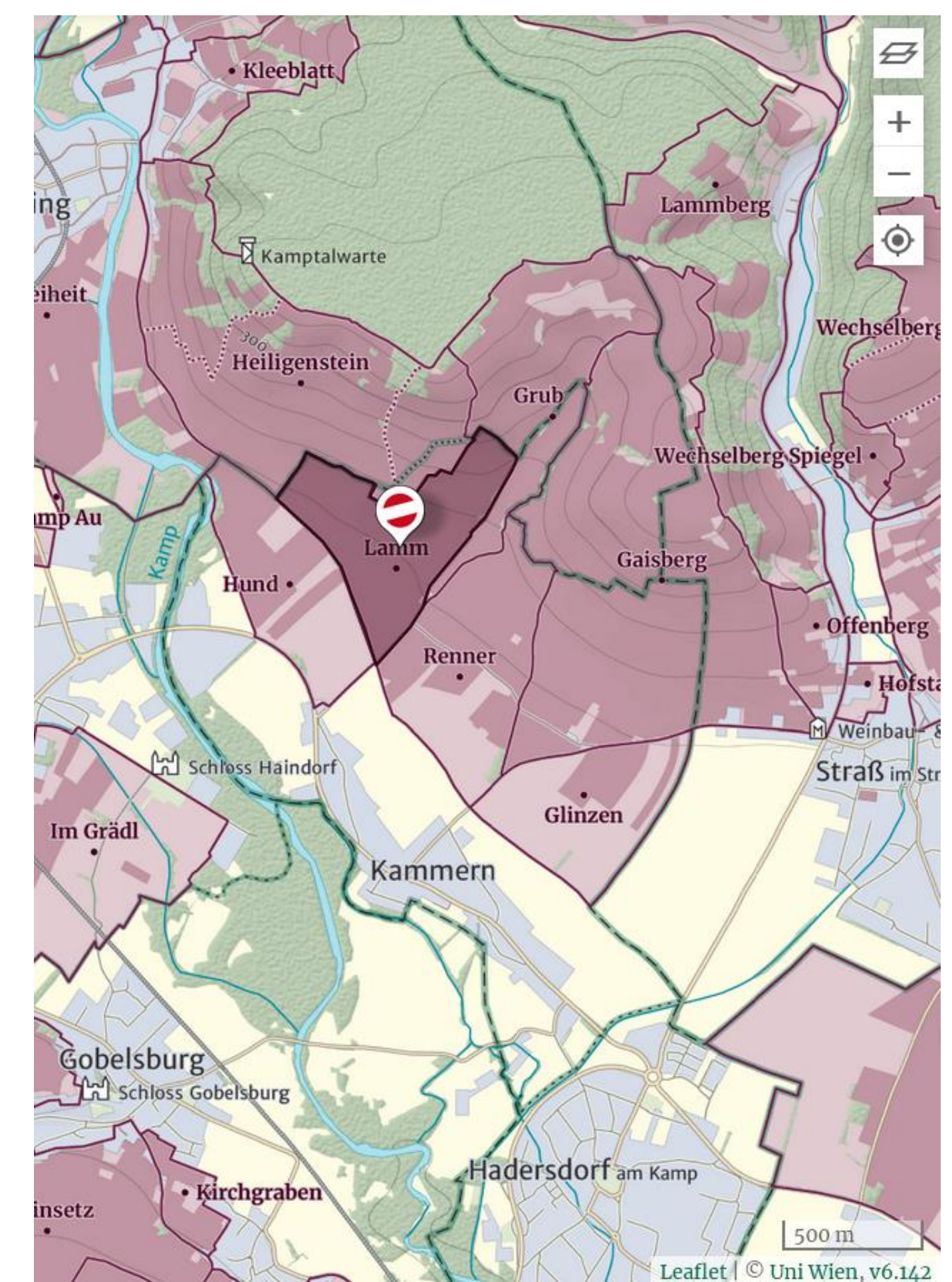
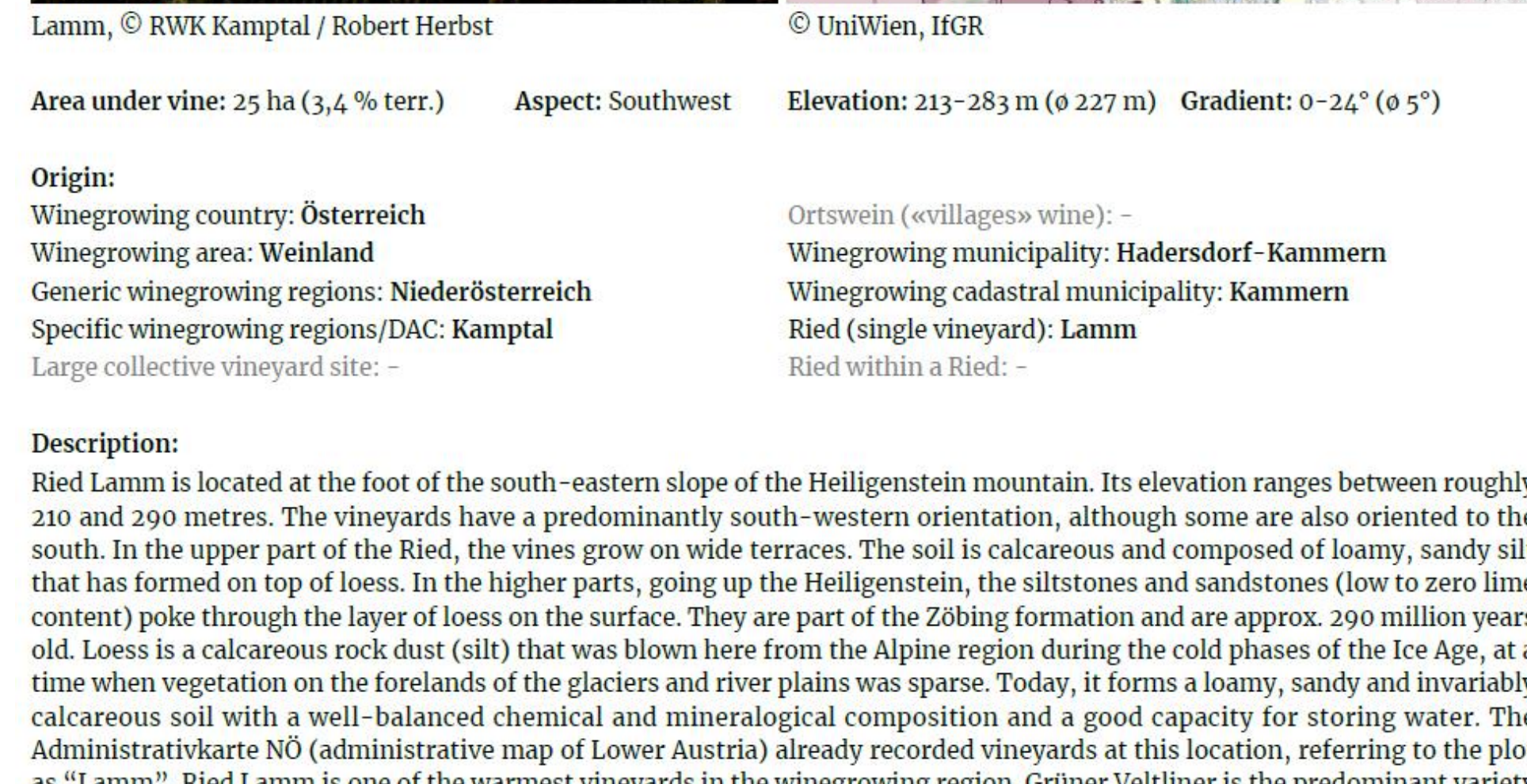
Lamm, © RWK Kamptal / Robert Herbst

Area under vine: 25 ha (3,4% terr.) Aspect: Southwest Elevation: 213-283 m (0 227 m) Gradient: 0-24° (0 5°)

Origin:
Winegrowing country: Österreich
Winegrowing area: Weinland
Generic winegrowing regions: Niederösterreich
Specific winegrowing regions/DAC: Kamptal
Large collective vineyard site: -

Ortswein ('villages' wine):
Winegrowing municipality: Hadersdorf-Kammern
Winegrowing cadastral municipality: Kammern
Ried (single vineyard): Lamm
Ried within a Ried: -

Description:
Ried Lamm is located at the foot of the south-eastern slope of the Heiligenstein mountain. Its elevation ranges between roughly 210 and 290 metres. The vineyards have a predominantly south-western orientation, although some are also oriented to the south. In the upper part of the Ried, the vines grow on wide terraces. The soil is calcareous and composed of loamy, sandy silt that has formed on top of loess. In the higher parts, going up the Heiligenstein, the siltstones and sandstones (low to zero lime content) poke through the layer of loess on the surface. They are part of the Zöbing formation and are approx. 290 million years old. Loess is a calcareous rock dust (silt) that was blown here from the Alpine region during the cold phases of the Ice Age, at a time when vegetation on the forelands of the glaciers and river plains was sparse. Today, it forms a loamy, sandy and invariably calcareous soil with a well-balanced chemical and mineralogical composition and a good capacity for storing water. The Administrativkarte NÖ (administrative map of Lower Austria) already recorded vineyards at this location, referring to the plot as "Lamm". Ried Lamm is one of the warmest vineyards in the winegrowing region. Grüner Veltliner is the predominant variety grown here.



Information on the 'Ried' include administrative data, winegrowing area, varieties and, in many cases, an illustrative photo. Complementary data on altitude (minimum-maximum), slope orientation (in 8 sectors plus flat) and gradient (minimum, maximum, average) for the area under vine are given according to the EU's Integrated Administration and Control System. Short descriptions with emphasis on geology and soil, field name in historical maps, and etymology of the denomination complement the available information. These descriptions are compiled by winegrowers, geologists, historians, and journalists.

AUSTRIANYVINEYARDS.com Brought to you by Austrian Wine

GRAPE VARIETIES Lamm (Ried (single vineyard))

GRAPE VARIETIES	WHITE	RED
1. Grüner Veltliner	92% (23 ha)	7.7% (1.9 ha)
2. Riesling	12%	18
3. Zweigelt	7.2%	1.8
4. Chardonnay	3.7%	0.9
5. Neuburger	1.6%	0.4
6. Traminer	1.2%	0.3
7. Weißburgunder	1.1%	0.3
8. Welschriesling	0.7%	0.2
9. Muskateller	0.6%	0.2
10. St. Laurent	0.5%	0.1
11. Frühofter Veltliner	0.3%	0.07
12. Sonstige Weiß	0.2%	0.05

