

# PROTECTED DESIGNATION OF ORIGIN (D.P.O.) VALDEPEÑAS: CLASSIFICATION AND MAP OF SOILS

Bravo, S.<sup>1\*</sup>; Garcia-Navarro, F.J.<sup>1</sup>; Amorós, J.A.<sup>1</sup>; Perez-De-Los-Reyes, C.<sup>1</sup>; Garcia-Pradas, J.<sup>1</sup>; Jimenez-Ballesta, R.<sup>2</sup>

<sup>1</sup> University of Castilla-La Mancha. H.T.S. Agricultural Engineers of Ciudad Real. Ronda de Calatrava, 7, 13071 Ciudad Real. Spain.

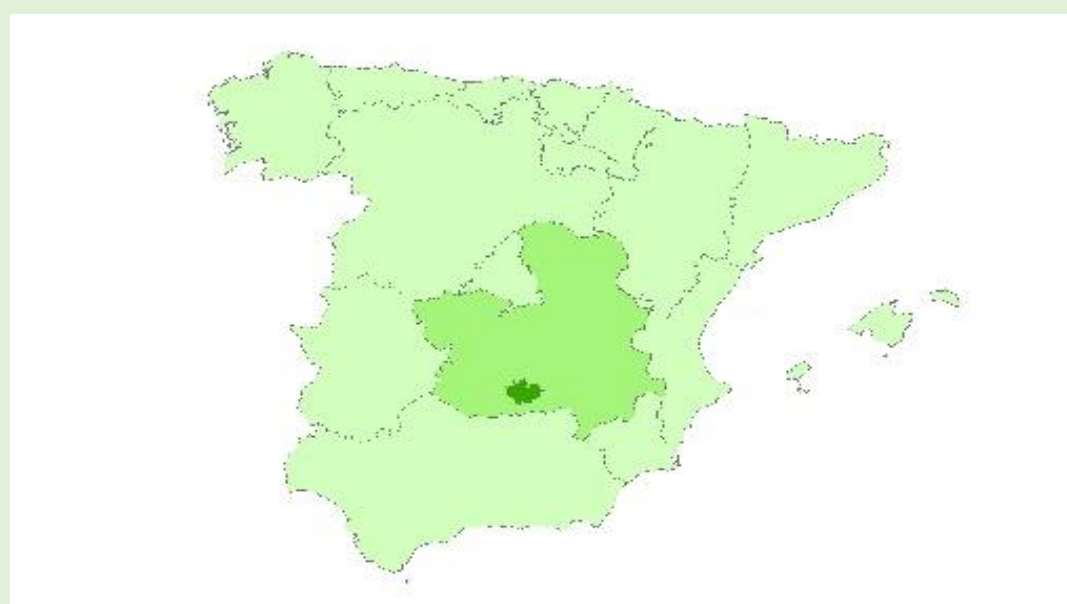
<sup>2</sup> University Autónoma of Madrid. Department of Geology and Geochemistry. Faculty of Science. 28049 Madrid

\* Corresponding author: sandra.bravo@uclm.es



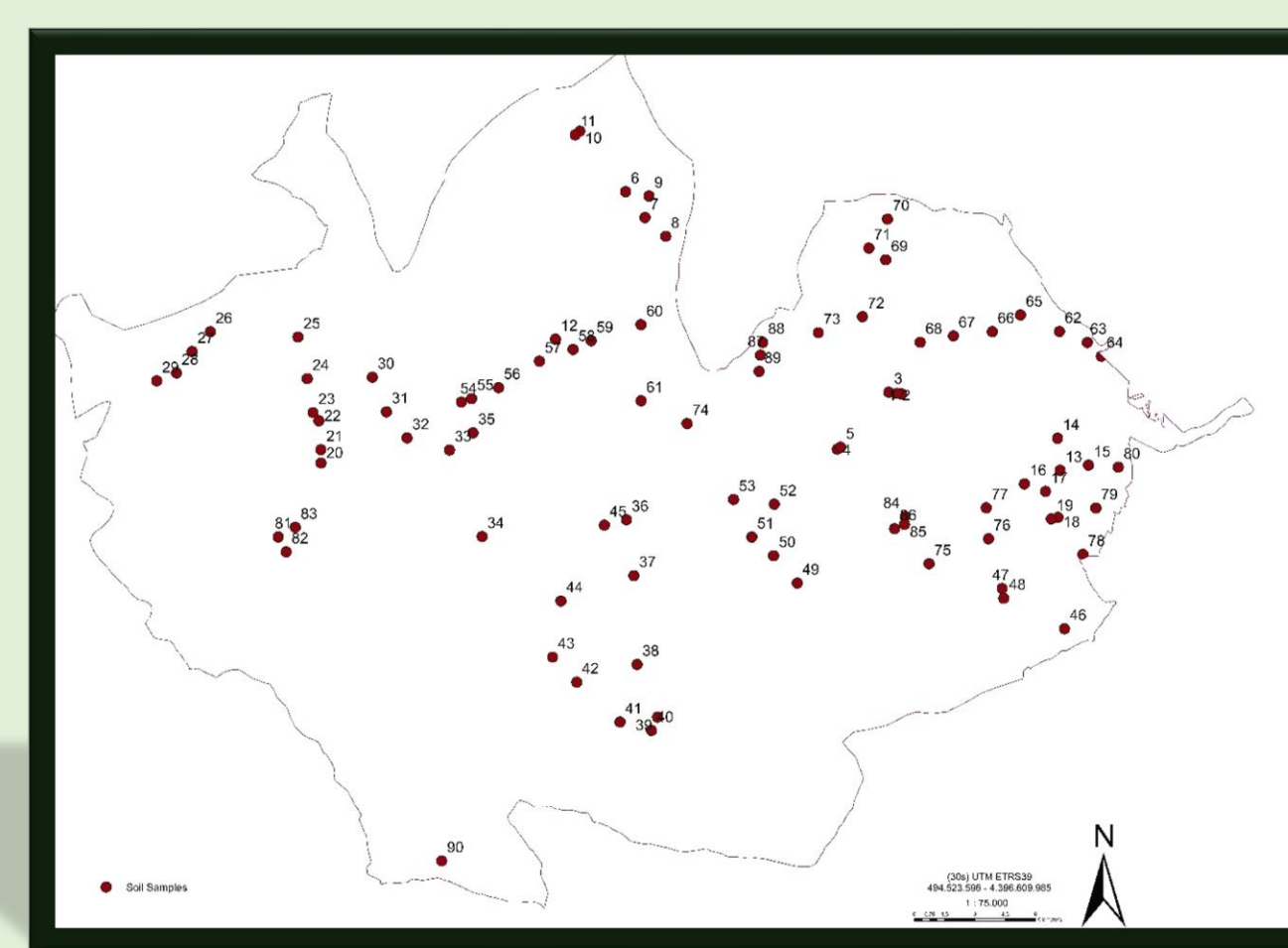
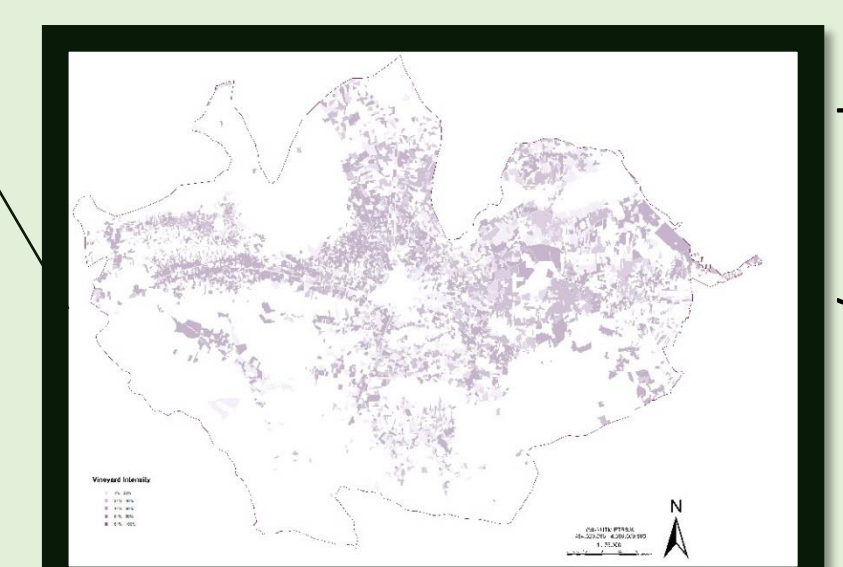
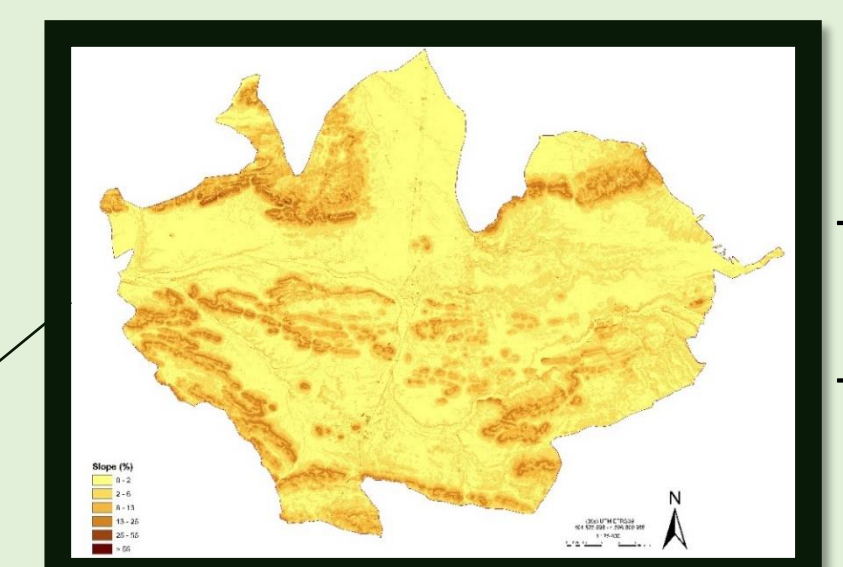
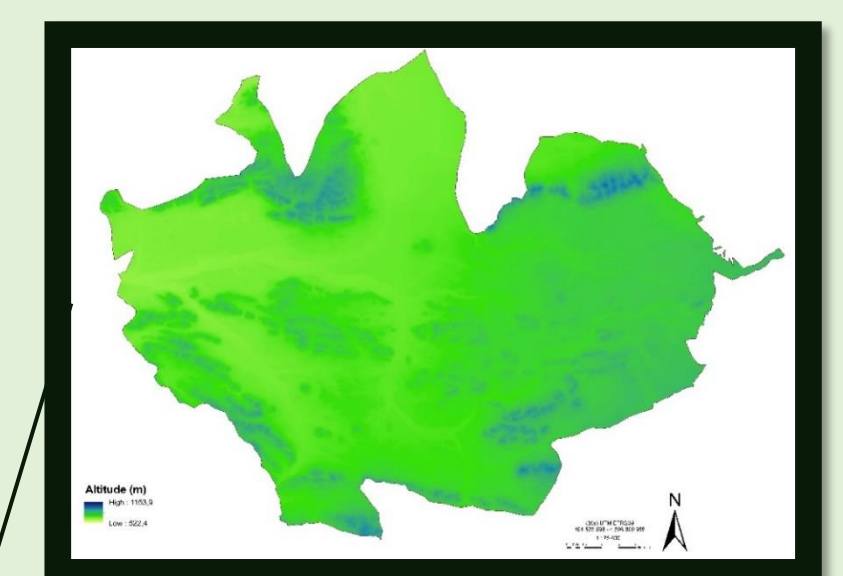
## Localization

The Protected Designation of Origin (D.P.O.) Valdepeñas is located in the south of the province of Ciudad Real (Central Spain) and has an extension of 22,000 ha of vineyard.



## 1<sup>st</sup> STEP

Making initial maps for choosing sampling points.



## 2<sup>nd</sup> STEP

Describing, sampling and analyzing soil profiles

- ❖ Soil Profiles: 90.
- ❖ Research team: 6 people
- ❖ More than 2000 analyzes made.
- ❖ More than 2000 km traveled



## 3<sup>rd</sup> STEP

Classification of soil.

According to the FAO classification, the 90 studied soils are classified into 5 groups:



Leptosols



Regosols



Cambisols



Calcisols



Luvisols



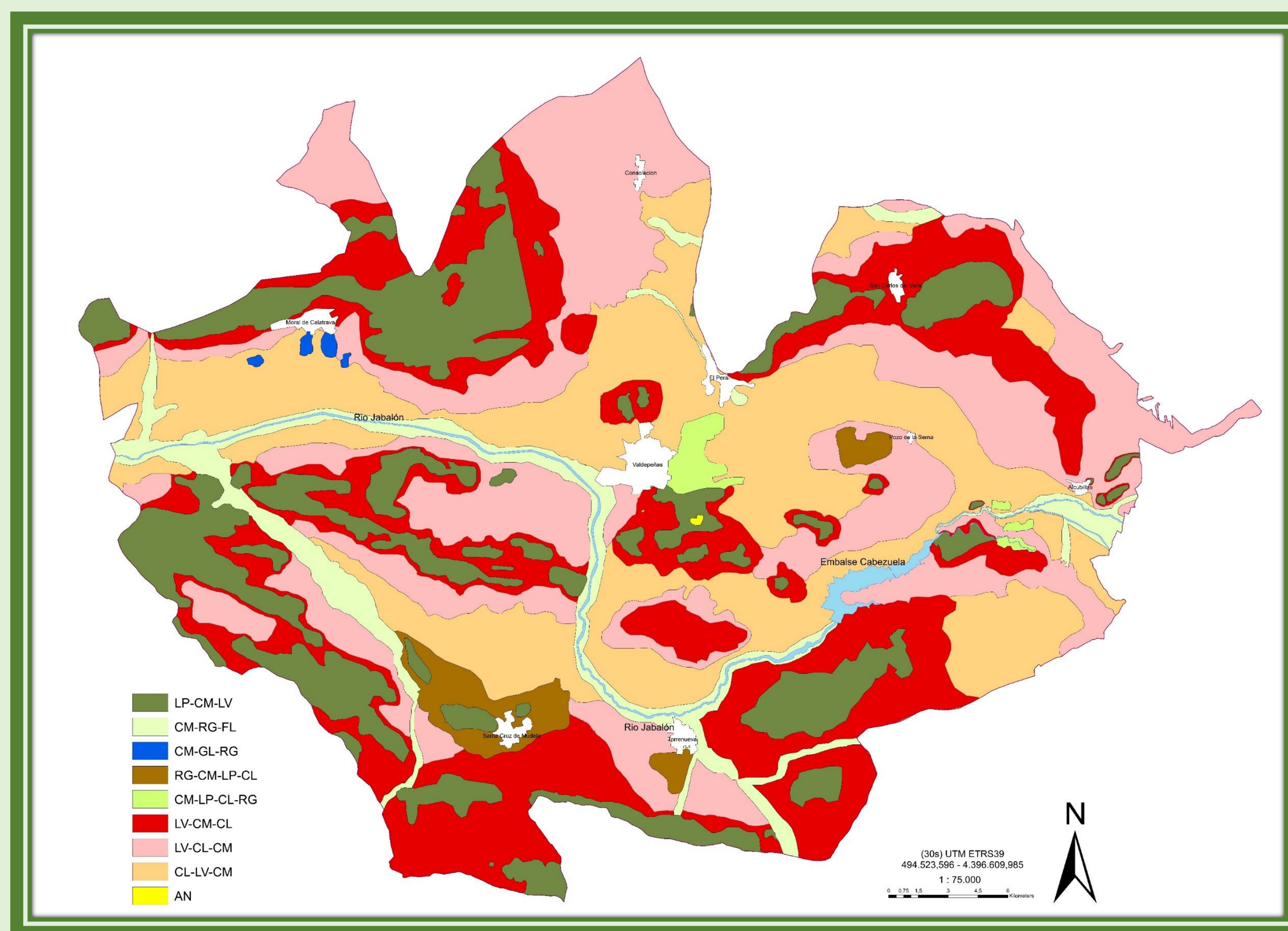
## 4<sup>th</sup> STEP

Making maps of soils.

Due to the found, variability of the studied soils the cartographic units are composed of two or more subgroups, which are associated in variable proportions and 9 different soils association have been established:

- **Unit 1:** Leptosols (80%), Cambisols (15%) and Luvisols (5%) [LP-CM-LV]
- **Unit 2:** Cambisols (40%) with Regosols (30%) and Luvisols (30%) [CM-RG-LV]
- **Unit 3:** Cambisols (40%) and Gleysols (40%) with Regosols (20%) [CM-GL-RG]
- **Unit 4:** Regosols (40%) with Cambisols (30%), Leptosols (15%) and Calcisols (15%) [RG-CM-LP-CL]
- **Unit 5:** Cambisols (25%), Leptosols (25%), Calcisols (25%) and Regosols (25%) [CM-LP-CL-RG]
- **Unit 6:** Luvisols (80%) with Cambisols (10%) and Calcisols (10%) [LV-CM-CL]
- **Unit 7:** Luvisols (40%) and Calcisols (40%) with Cambisols (20%) [LV-CL-CM]
- **Unit 8:** Calcisols (80%) with Cambisols (10%) and Luvisols (10%) [CL-CM-LV]
- **Unit 9:** Anthrosols [AN]

Knowledge of the different soils types existing in the area allows to make a more detailed recommendation on the establishment and management of the vineyard.



## ACKNOWLEDGMENTS

This study has been funded by P.D.O. Valdepeñas (UCTR180065)

